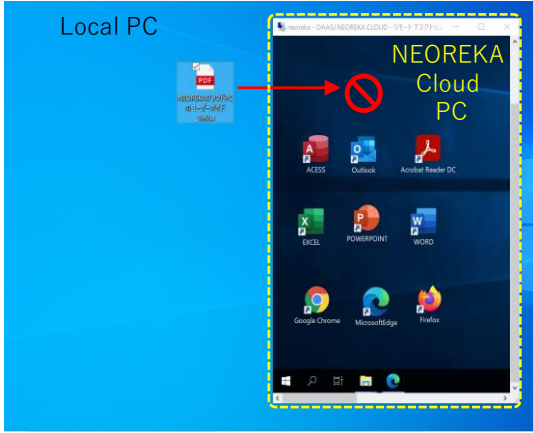
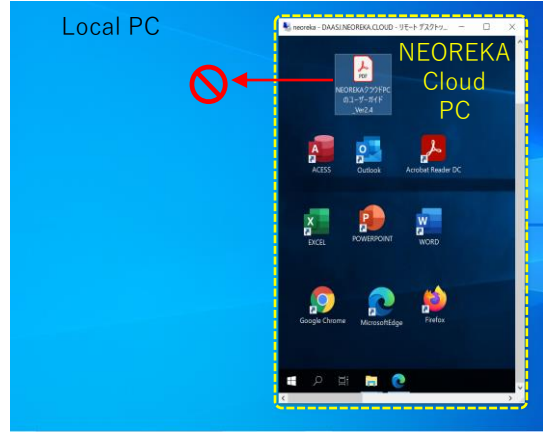


【 How to transfer files between your local PC and NEOREKA Cloud PC 】

You **cannot** use **drag and drop** to transfer any file to "Local PC-> NEOREKA Cloud PC" or "NEOREKA Cloud PC-> Local PC". (Due to the characteristics of virtual desktop services).

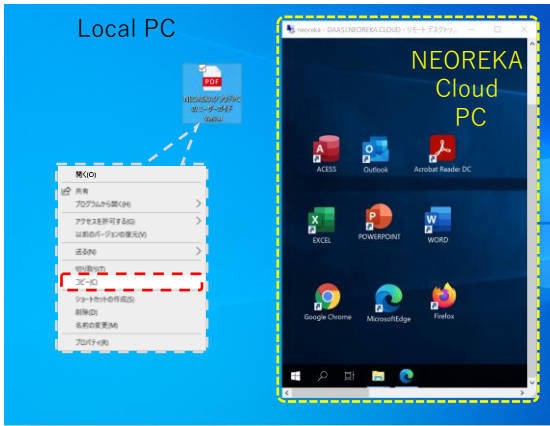


「Local PC → NEOREKA Cloud PC」

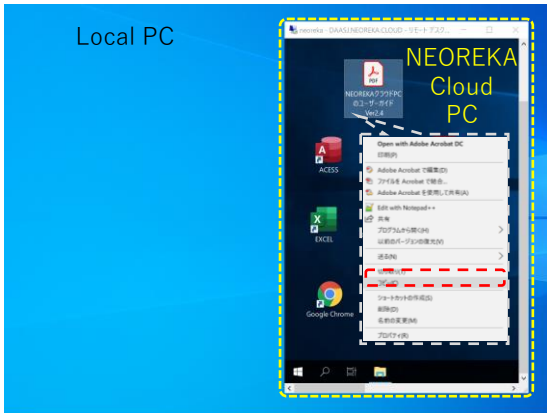
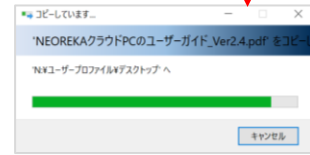
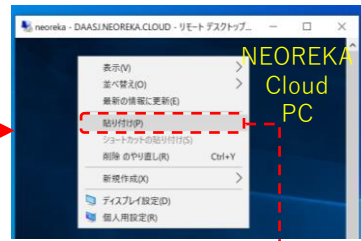


「NEOREKA Cloud PC → Local PC」

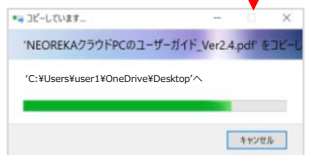
Copy and paste: You can copy and paste any file.



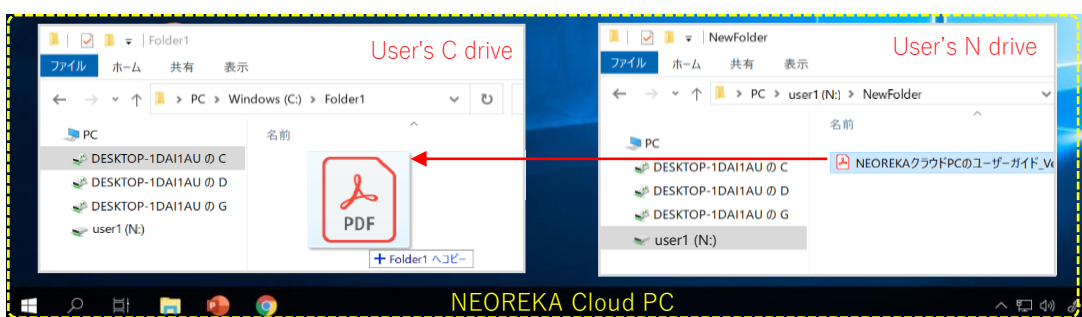
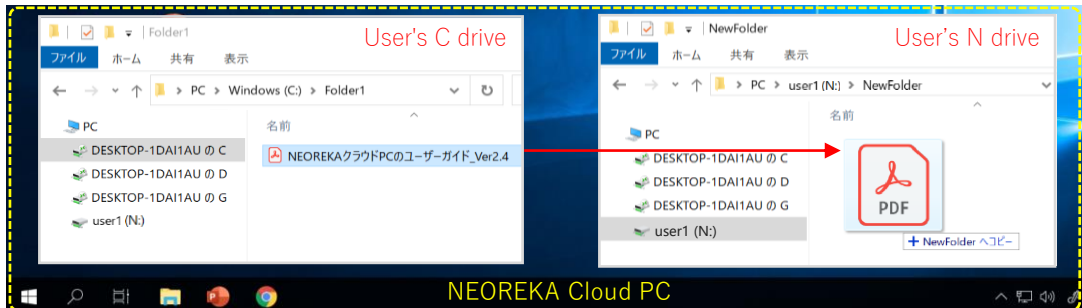
「Local PC → NEOREKA Cloud PC」



「NEOREKA Cloud PC → Local PC」



Drag and drop: Open Explorer from NEOREKA cloud PC, access the folder and use drag and drop.



※ If you frequently exchange files between your local PC and NEOREKA cloud PC, using Google Drive, OneDrive or Dropbox is convenient and fast.