

Convenient Usage of NEOREKA Cloud PC

Share files seamlessly using
OneDrive

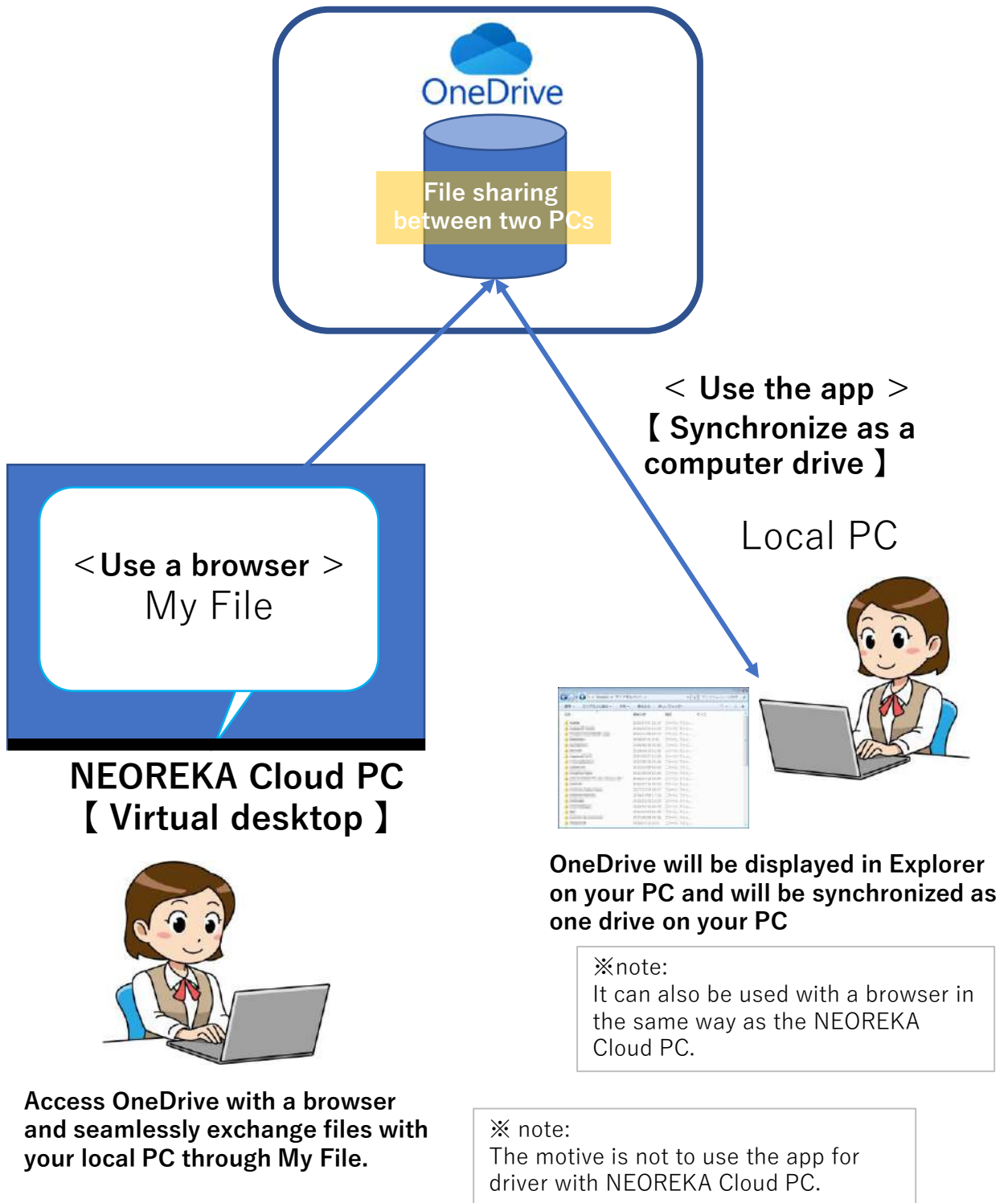
(Ver .1.0)

August 2021 edition



Use the NEOREKA Cloud PC and OneDrive browser version conveniently.

If you frequently exchange files between your local PC and NEOREKA Cloud PC, OneDrive is convenient.



**NEOREKA Cloud PC
【 Virtual desktop 】**



Access OneDrive with a browser and seamlessly exchange files with your local PC through My File.

OneDrive will be displayed in Explorer on your PC and will be synchronized as one drive on your PC

※note:
It can also be used with a browser in the same way as the NEOREKA Cloud PC.

※ note:
The motive is not to use the app for driver with NEOREKA Cloud PC.

【 Internal Usage / Setting / Operation Method on the Local PC Side 】

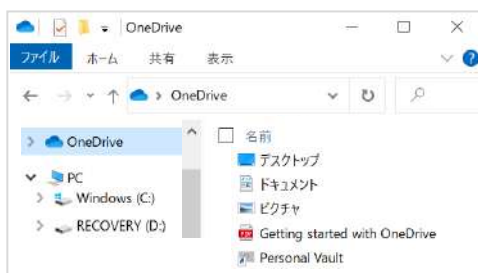
For internal usage and local PC, it can be used with a browser or OneDrive app. Here, we introduce the method using the app. The usage with a browser is the same as the usage of NEOREKA Cloud PC described later.

First, install the OneDrive app on your local PC and configure the setting.

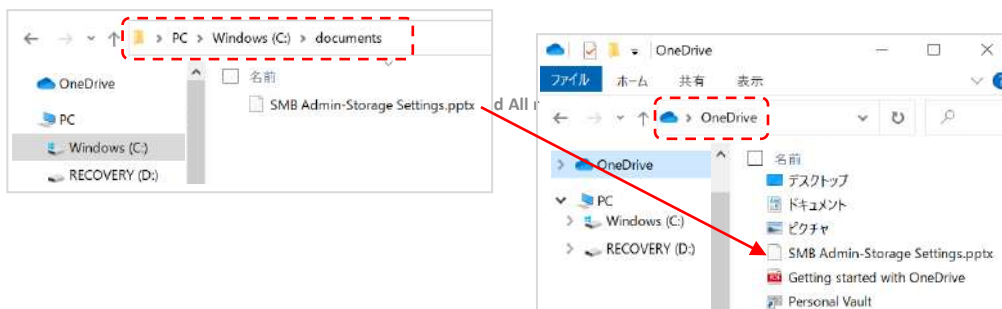
- ① **【 App installation 】** On your local PC, open Explorer and you'll see the OneDrive folder (empty).
- ② Click the OneDrive icon to make the first time setup.
- ③ Enter your email address and click [Sign In]. * If you do not have a Microsoft account, click [Create Account] and follow the procedure for creating an account.



- ④ Enter your password and click [Sign In] to continue with OneDrive's first time setup.
- ⑤ Upon completing the first time setup, the following will be displayed in the OneDrive folder.



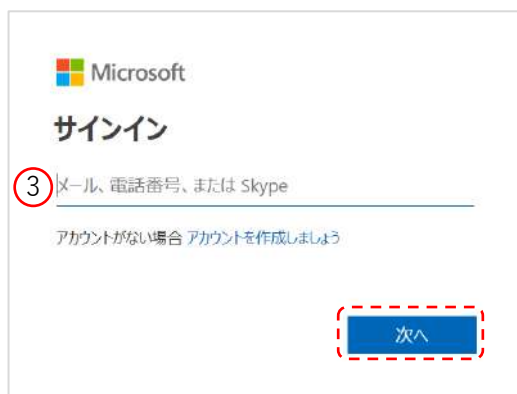
- ⑥ Select / copy any file on the "C: drive" of your local PC, and move / save it to the OneDrive folder.



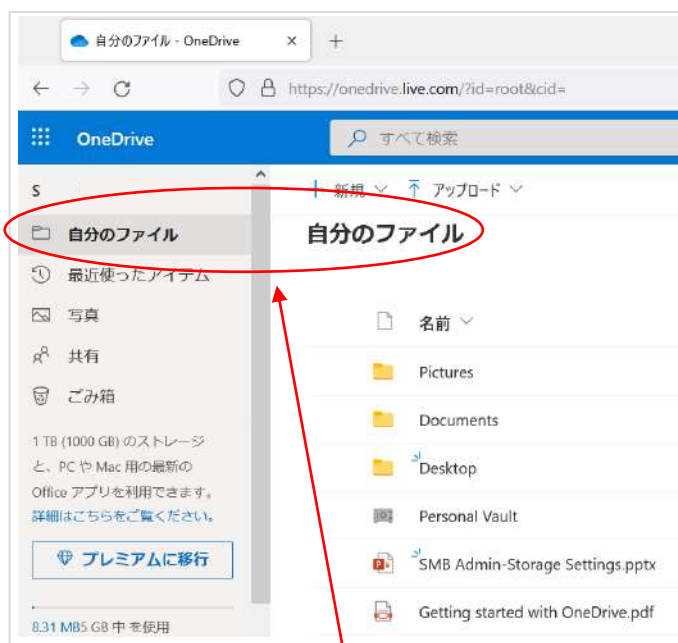
【 Operation Method on NEOREKA Cloud PC Side 】

When OneDrive is ready, let's use it in NEOREKA Cloud PC by following the steps below.

- ① Log in to the NEOREKA Cloud PC. **(On NEOREKA Cloud PC, use the browser only.)**
- ② Open browser and type <https://onedrive.live.com/about/ja-jp/signin>
- ③ The following screen will open, sign in to your Microsoft account, and click [Next]. Enter your password and click [Next].



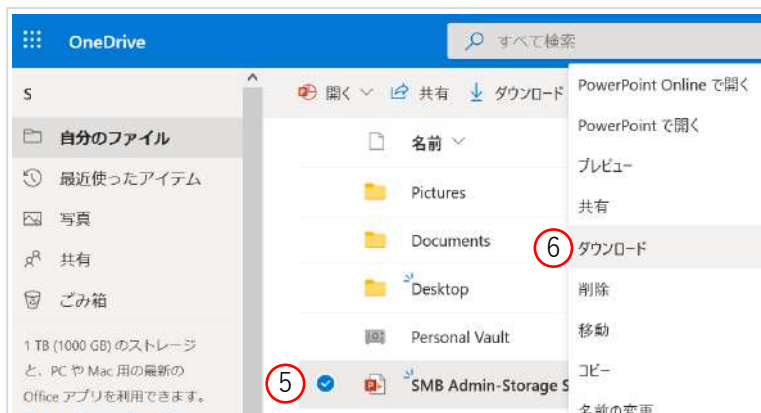
- ④ Once log in to the browser version of OneDrive successfully, the following screen will be displayed.



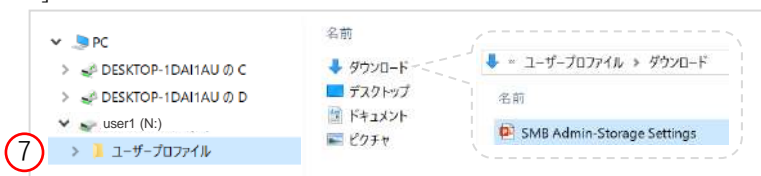
For this My File, the My File of OneDrive that synchronizes with the local PC is displayed.

Download the file of My File to the NEOREKA Cloud PC.

- ⑤ Right-click on any file name in the browser version of OneDrive.
- ⑥ Select Download from the list.



- ⑦ Save the file. The file is automatically saved in the user's [N: drive> User profile> Downloads] folder on the NEOREKA Cloud PC.



- ⑧ You can also edit the files on My Drive directly from your browser (depends on the file format).

Upload the NEOREKA Cloud PC file to My File.

- ⑨ If you want to transfer any file to your local PC, drag and drop it into "My File" in the browser version of OneDrive to upload the file.



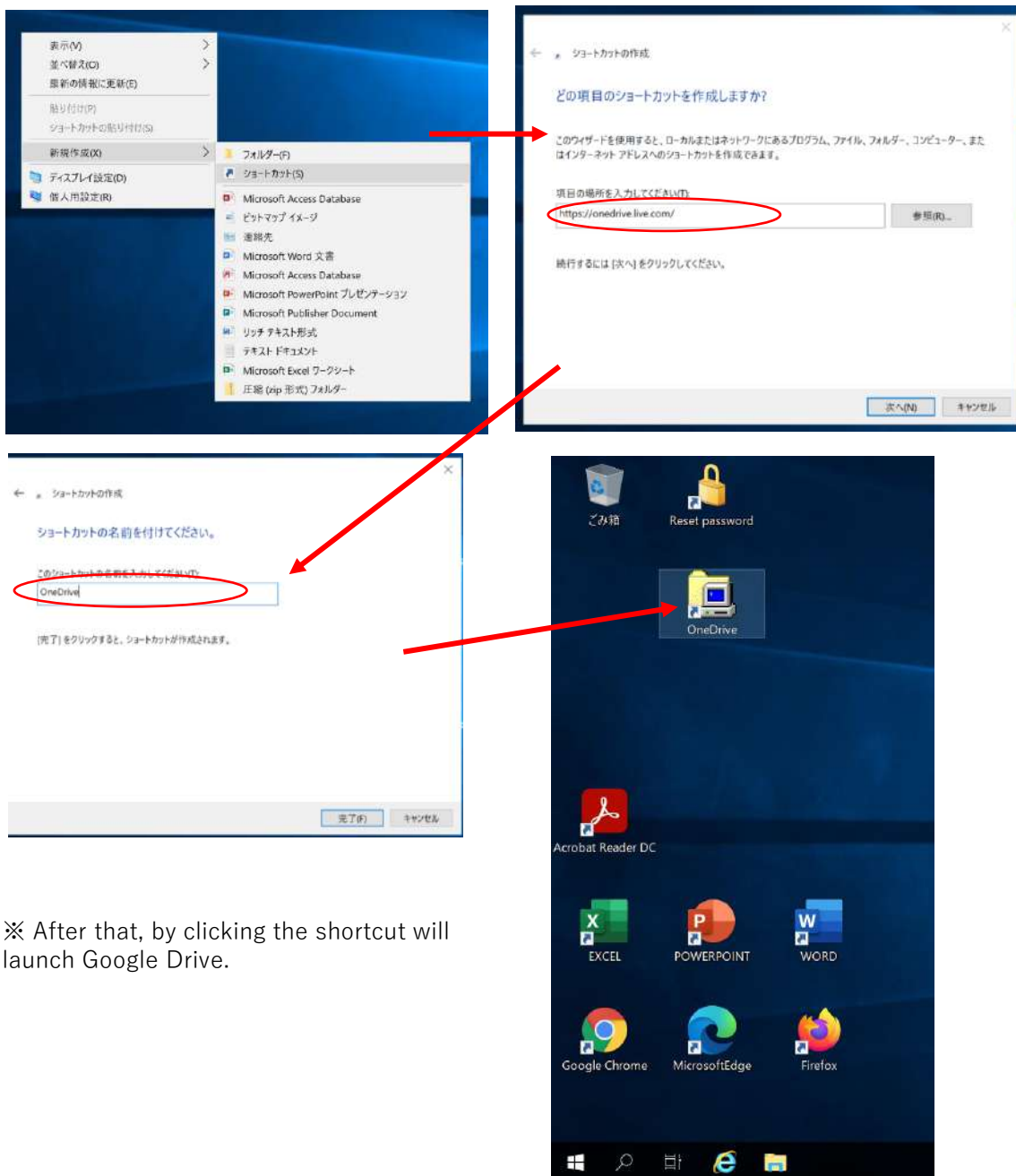
- ⑩ Return to your local PC. Open OneDrive app. The file copied / uploaded in ⑨ is synchronized with the OneDrive app, so you can see the file.



Create a OneDrive shortcut on the desktop of your NEOREKA Cloud PC.

Create a shortcut on your desktop for easy access to My File in OneDrive from the NEOREKA Cloud PC.

- ① Right-click on the desktop → select "New" → "Shortcut".
- ② Enter "https://onedrive.live.com " in the location of the item, select "Next", name the shortcut and click the "Finish" button.
- ③ The desktop icon will be the browser icon you used, but you can change it individually.



※ After that, by clicking the shortcut will launch Google Drive.

Note: OneDrive specifications are subject to change by Microsoft without notice.

<END>