

# Convenient Usage of NEOREKA Cloud PC

Share files seamlessly using  
**Google Drive**

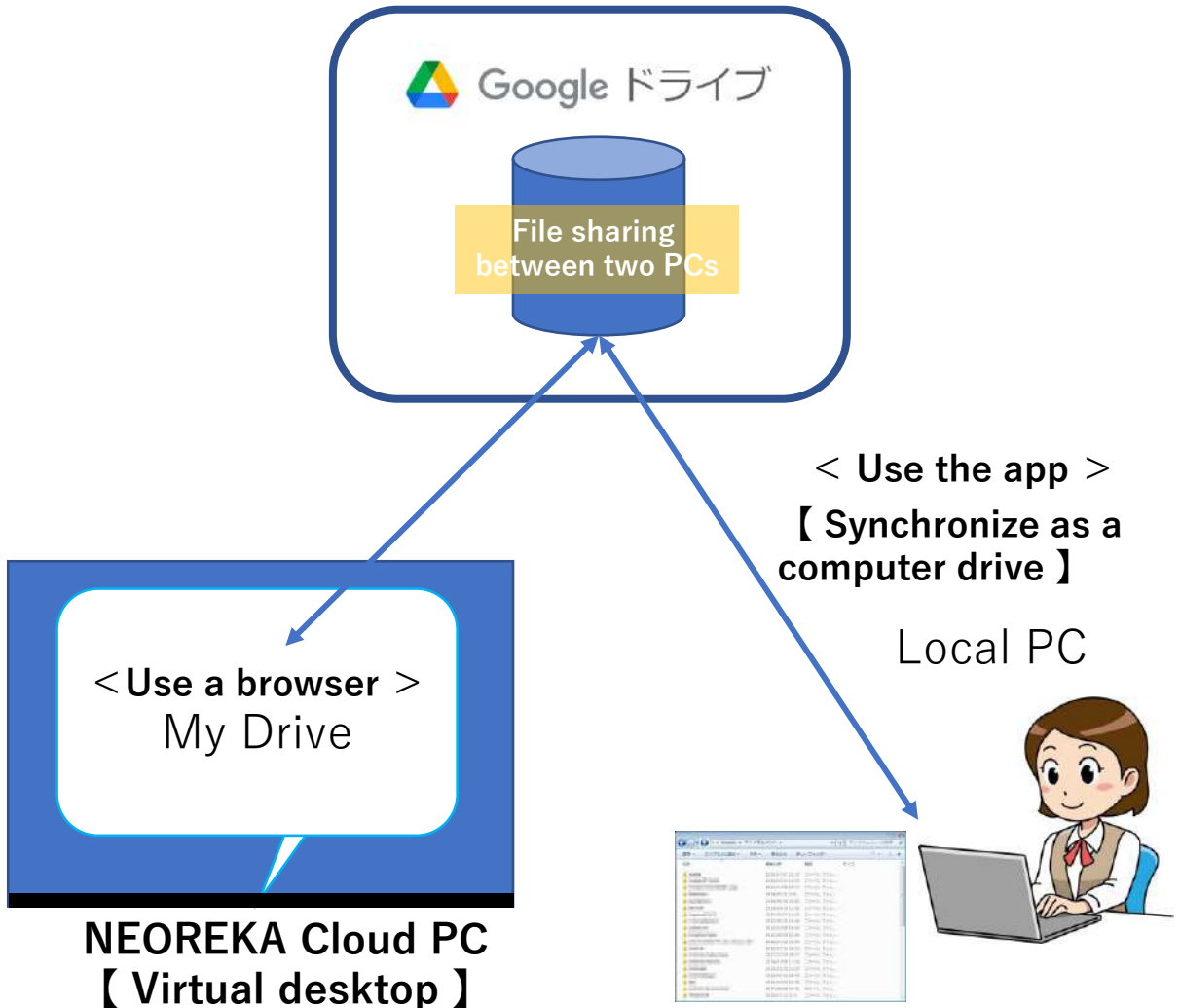
(Ver .1.0)

August 2021 edition



Use the NEOREKA Cloud PC and Google Drive browser version conveniently.

If you frequently exchange files between your local PC and NEOREKA Cloud PC, Google Drive is convenient.



Access Google Drive with a browser and seamlessly exchange files with your local PC through My Drive.

Google Drive will be displayed in Explorer on your PC and will be synchronized as one drive on your PC

※note:  
It can also be used with a browser in the same way as the NEOREKA Cloud PC.

※ note:  
The motive is not to use the app for driver with NEOREKA Cloud PC.

## 【 Internal Usage / Setting / Operation Method on the Local PC Side 】

**For internal usage and local PC, it can be used with a browser or Google Drive app. Here, we introduce the method using the app. The usage with a browser is the same as the usage of NEOREKA Cloud PC described later.**

**First, install the Google Drive app on your local PC and configure the setting.**

- ① **【 App installation 】** Open browser on your local PC.
- ② Type [https://www.google.com/intl/ja\\_jp/drive/download](https://www.google.com/intl/ja_jp/drive/download)
- ③ If you have a Google personal account, download from an individual, and if you have an organizational account, select and click [Details] on the PC version drive.  
※ You can also use it with your personal account.



- ④ Here, we will introduce an example of <those who have an organizational account>. (You can create a drive for your computer). Windows user example: Download the GoogleDriveSetup.exe file.



- ⑤ Click the downloaded file to run the installer.



- ⑥ Install the Google Drive app.



- ⑦ If the installation is successful, the "Login to Google Drive" browser pop-up will be displayed.

- ⑧ **Log in with your browser** and make the initial settings.



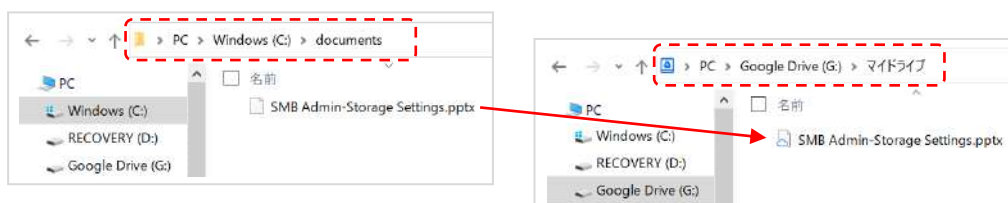
- ⑨ Log in to your Google account, "confirm that you downloaded Google Drive from Google", and then [Login]. ※ If you do not have a Google account, click [Create Account] to follow the procedure for creating a Google account.



- ⑩ The Google Drive app version will be displayed on your local PC. This completes the settings.



- ⑪ It is now possible to select / copy any file in "C: Drive" of the local PC and move / save it to the "My Drive" folder of the Google Drive app version.



## 【 Operation Method on NEOREKA Cloud PC Side 】

**When Google Drive is ready, let's use it in NEOREKA Cloud PC by following the steps below.**

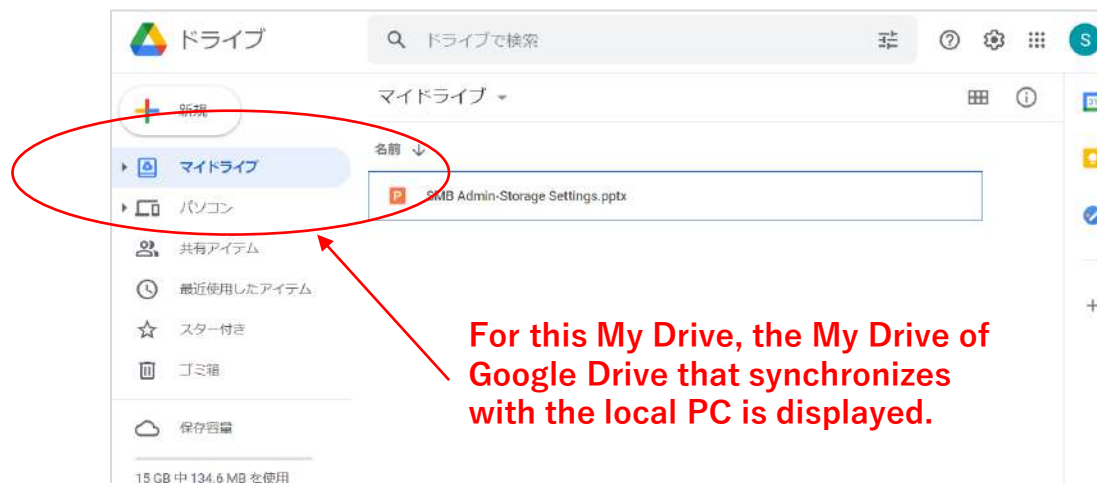
- ① Log in to the NEOREKA Cloud PC. **(On NEOREKA Cloud PC, use the browser only.)**
- ② Open browser and type [https://www.google.com/intl/ja\\_jp/drive](https://www.google.com/intl/ja_jp/drive)
- ③ Click [Go to Drive].



- ④ The following screen will open, log in with your Gmail account,
  - ⑤ Click [Next]. Enter your password and click [Next].
- ※ If you do not have a Google account, click "Create Account" to follow the steps to create a Google account.



- ⑥ If you log in to Google Drive for the browser successfully, the following screen will be displayed.



## Download the file of My Drive to the NEOREKA Cloud PC.

- ⑧ Right-click on any file name in My Drive.
- ⑨ Choose download from the list.



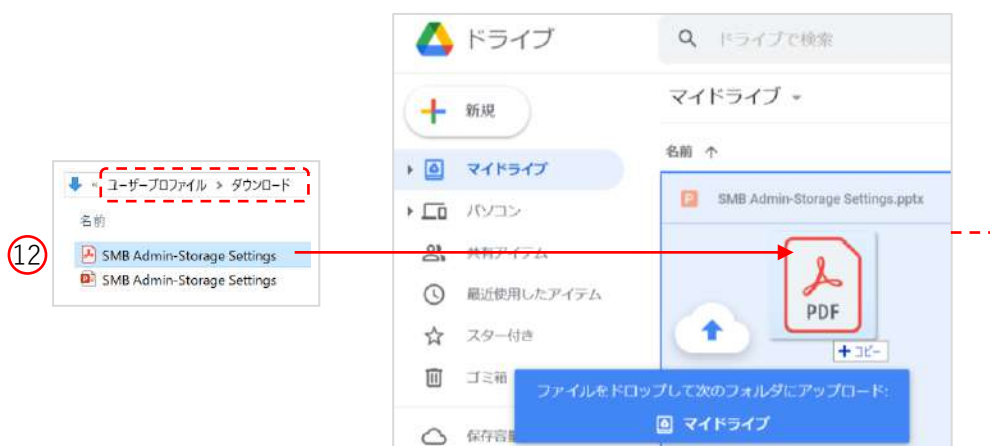
- ⑩ Save the file. If you do not specify the save location, the file will be automatically saved in the user's [N: Drive> User profile> Download] folder on the NEOREKA cloud PC.



- ⑪ You can also edit the files on My Drive directly from your browser (depends on the file format).

## Upload the NEOREKA Cloud PC file to My Drive.

- ⑫ To transfer any file to your local PC, drag and drop it into "My Drive" in the Google Drive browser version to copy and upload the file.



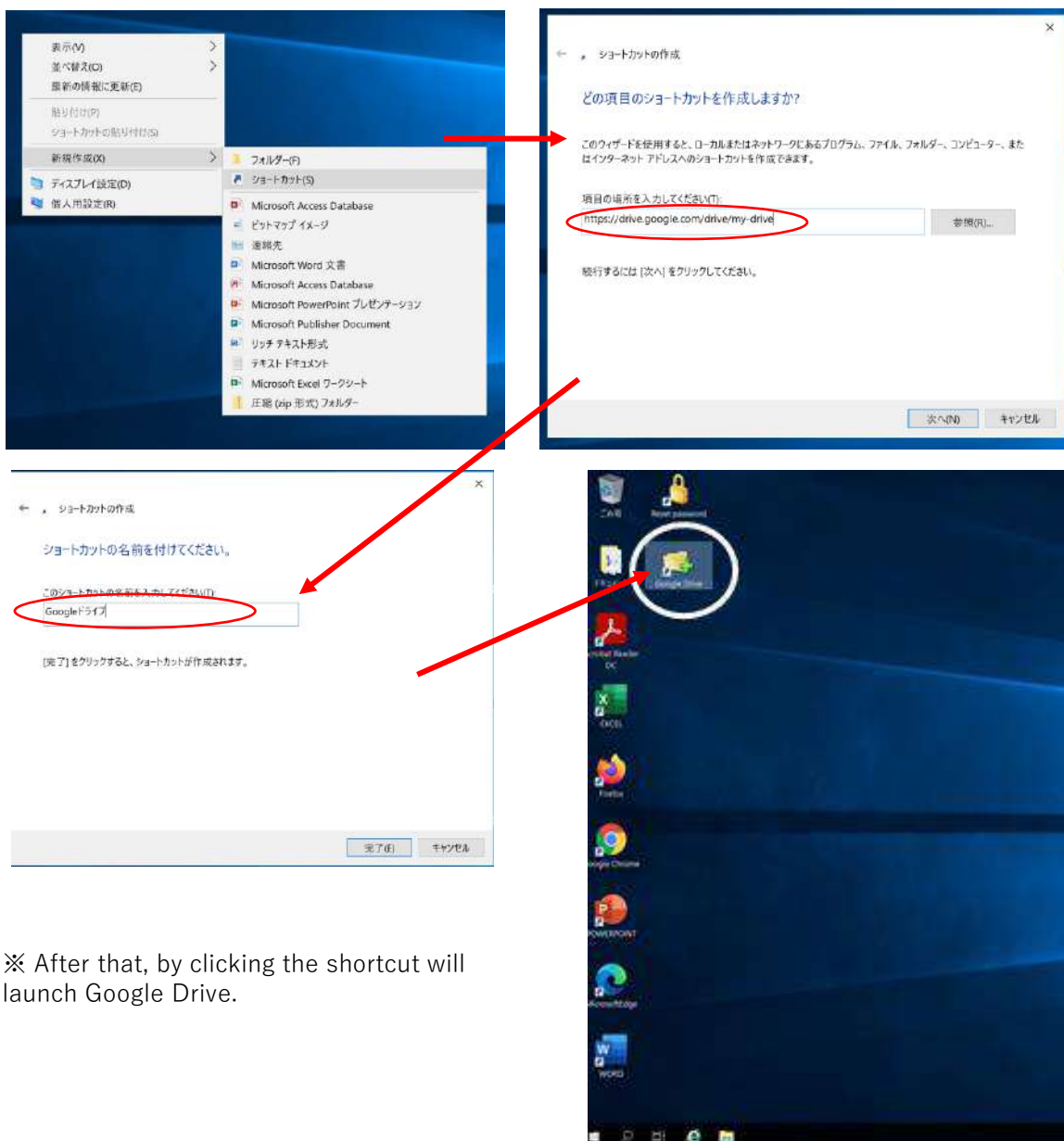
- ⑬ Go back to your local PC and open the Google Drive app. The file copied / uploaded in ⑫ is synchronized with the Google Drive app version and you can check and edit the file.



## Create a Google Drive shortcut on the desktop of your NEOREKA Cloud PC.

Create a shortcut on your desktop for easy access to My Drive in Google Drive from the NEOREKA Cloud PC.

- ① Right-click on the desktop → select "New" → "Shortcut".
- ② Enter "https://drive.google.com/drive/my-drive" in the location of the item, select "Next", name the shortcut and click the "Finish" button.
- ③ The desktop icon will be the browser icon you used, but you can change it individually.



※ After that, by clicking the shortcut will launch Google Drive.

**Note: Google Drive specifications are subject to change by Google without notice.**

<END>